

**State of Wyoming Corner Record**

(In compliance with the CORNER PERPETUATION AND FILING ACT, Wyoming Statutes, 1977, Section 36-11-101, et. seq., and the Rules and Regulations of the Board of Registration for Professional Engineers and Professional Land Surveyors)

Reverse side of this form may be used if more space is needed.

Record of original survey and citation of source of historical information (if corner is lost or obliterated). Description of corner monumentation evidence found and/or monument and accessories established to perpetuate the location of this corner. Sketch of relative location of monument, accessories, and reference points with course and distance to adjacent corner(s) (if determined in this survey). Method and rationale for reestablishment of lost or obliterated corner.

G.L.O. Notes: U.S. Deputy Surveyor, Edwin James, June 20, 1871; 39.75 Chains... Set a sand stone 16 x 10 x 5 for quarter section corner.

Found: A well set marked reddish colored 3" x 7" sandstone 3" out of the ground. Stone was marked with a 4 on the north face. Top portion of the stone appears to have broken off. Stone was in a East/West fenceline.

Set: Nothing

See back of this sheet for ties to adjacent monuments.

200704  
LARAMIE COUNTY CLERK  
CHEYENNE, WY.  
97 APR 7 PM 4 40

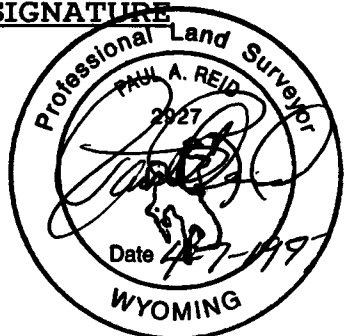
Date of Field Work: 21, March, 1994 Office Reference: EXXON Book No.1, Pg.60

**CROSS INDEX DIAGRAM**

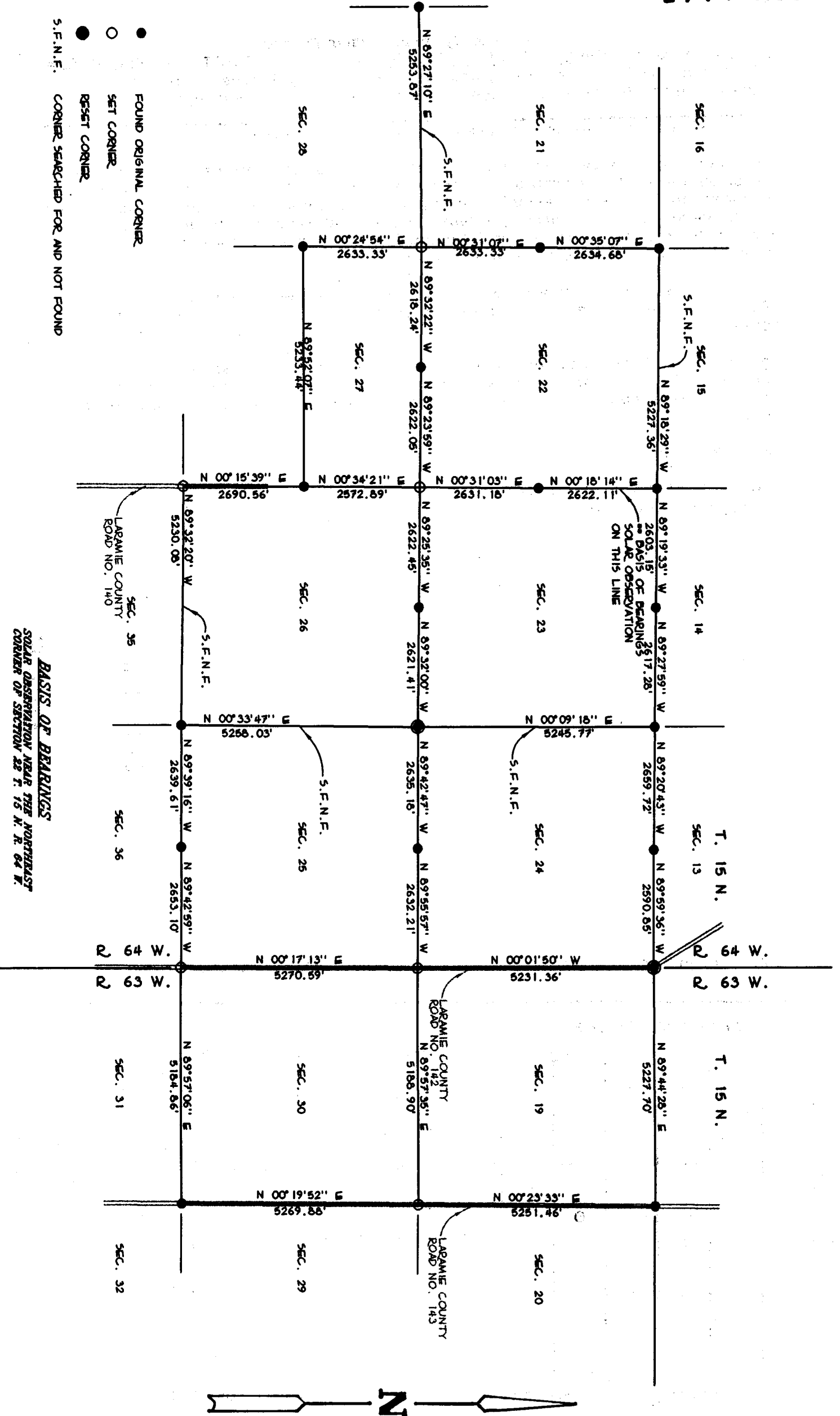
A	1	2	3	4	5	6	7	8	9	10	11	12	13	14	15	16	17	18	19	20	21	22	23	24	25	A
B																										B
C		6																								C
D			5																							D
E				4																						E
F					3																					F
G						2																				G
H							1																			H
I																										I
J																										J
K																										K
L																										L
M																										M
N																										N
O																										O
P																										P
Q																										Q
R																										R
S																										S
T																										T
U																										U
V																										V
W																										W
X																										X
Y																										Y
Z																										Z
	1	2	3	4	5	6	7	8	9	10	11	12	13	14	15	16	17	18	19	20	21	22	23	24	25	

Firm/Agency, Address  
Paul A. Reid, A.V.I.p.c.  
2035 Westland Road  
Cheyenne, WY 82001  
 Telephone Number:  
(307)-634-6017

This corner record was prepared by me or under my direction and supervision.  
**SEAL & SIGNATURE**



Corner Name: N 1/4 Cor. Section: 23 T 15N R 64W; 6TH P.M. Cross-Index No.: N-19



- FOUND ORIGINAL CORNER
- SET CORNER
- RESET CORNER
- S.F.N.F. CORNER SEARCHED FOR AND NOT FOUND

**BASIS OF BEARINGS**  
 SOLAR OBSERVATION NEAR THE NORTHEAST  
 CORNER OF SECTION 28 T. 15 N. R. 64 W.